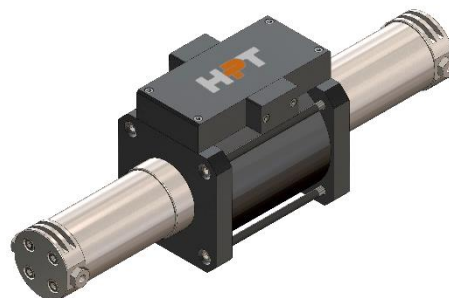


FEATURES

MODEL	HB150076SD14300			
TYPE	Gas Booster - Double Acting			
	Single Stage - Single Drive			
RATING	15,000 psi	-	1034 Bar	
MAX OUTLET PRESSURE (pB)	15,000 psi	-	1034 Bar	
TRANSMISSION RATIO (i)	1:76			

TECHNICAL

COMPRESSION RATIO	1:15			
DISPLACEMENT CYCLE	2.94 in ³	-	48.3 cm ³	
MAX PUMPING SPEED	100 cpm			
MAX OP. TEMPERATURE	212 °F	-	100 °C	



PERFORMANCES

MAX DRIVE PRESSURE (pL)	145 psi	-	10 Bar	
AIR CONSUPTION	65.2 scfm	-	1,847 NI/min	(pL 145 psi - 10 Bar, 50 cpm)
OUTLET FLOW	8.5 scfm	-	241 NI/min	(pA 1450 psi - 100 Bar, 50 cpm)
MIN INLET PRESSURE (pA)	260 psi	-	18 Bar	(to reach pB)
MAX INLET PRESSURE (pA)	15,000 psi	-	1034 Bar	
STALL PRESSURE	i * pL + pA			

CONNECTIONS

GAS INLET	1/4" BSPP (F)	DRIVE RELIEF VALVE	3/8" BSPP (F)
GAS OUTLET	1/4" BSPP (F)	EXT. PILOT SUPPLY	1/8" BSPP (F)
DRIVE INLET	1/2" BSPP (F)	PULSE COUNTER	1/8" BSPP (F)

INFORMATIONS

LENGHT	24.6 in	-	625 mm	(approx.)
WIDTH	6.3 in	-	160 mm	(approx.)
HEIGHT	7.9 in	-	200 mm	(approx.)
NET WEIGHT	43.0 lb	-	19.5 Kg	(approx.)

ALL PICTURES SHOWN ARE FOR ILLUSTRATION PURPOSE ONLY. ACTUAL PRODUCT MAY VARY DUE TO PRODUCT ENHANCEMENT.