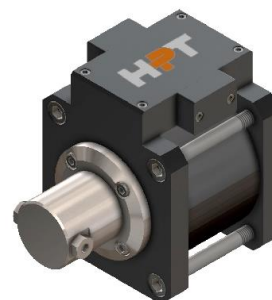


## FEATURES

<b>MODEL</b>	HP600400SS17200				
<b>TYPE</b>	Liquid Pump - Single Acting				
	Single Drive				
<b>RATING</b>	60,000	psi	-	4137	Bar
<b>MAX OUTLET PRESSURE (pB)</b>	58,015	psi	-	4000	Bar
<b>TRANSMISSION RATIO (i)</b>	1:400				



## TECHNICAL

<b>DISPLACEMENT CYCLE</b>	0.29	in <sup>3</sup>	-	4.7	cm <sup>3</sup>
<b>MAX PUMPING SPEED</b>	100	cpm			
<b>MAX OP. TEMPERATURE</b>	212	°F	-	100	°C

## PERFORMANCES

<b>MAX DRIVE PRESSURE (pL)</b>	145	psi	-	10	Bar
<b>AIR CONSUPTION</b>	66.6	scfm	-	1,885	NI/min (pL 145 psi - 10 Bar, 50 cpm)
<b>MAX OUTLET FLOW</b>	0.0	scfm	-	0.47	NI/min (100 cpm)
<b>STALL PRESSURE</b>	i * pL				

## CONNECTIONS

<b>INLET</b>	3/8" BSPP (F)	<b>DRIVE RELIEF VALVE</b>	3/8" BSPP (F)
<b>OUTLET</b>	3/4-16 UNF	<b>EXT. PILOT SUPPLY</b>	1/8" BSPP (F)
<b>DRIVE INLET</b>	1/2" BSPP (F)	<b>PULSE COUNTER</b>	1/8" BSPP (F)
		<b>AIR EXH. SILENCER</b>	1/2" BSPP (F)

## INFORMATIONS

<b>LENGHT</b>	9.6	in	-	245	mm (approx.)
<b>WIDTH</b>	8.7	in	-	220	mm (approx.)
<b>HEIGHT</b>	10.2	in	-	260	mm (approx.)
<b>NET WEIGHT</b>	34.2	lb	-	15.5	Kg (approx.)

ALL PICTURES SHOWN ARE FOR ILLUSTRATION PURPOSE ONLY. ACTUAL PRODUCT MAY VARY DUE TO PRODUCT ENHANCEMENT.