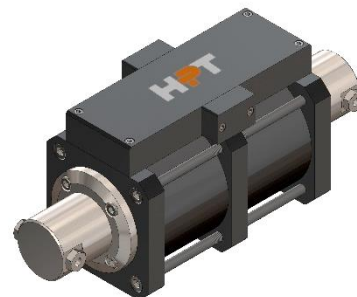


FEATURES

MODEL	HP600392SD24200				
TYPE	Liquid Pump - Double Acting				
	Double Drive				
RATING	60,000	psi	-	4137	Bar
MAX OUTLET PRESSURE (pB)	56,855	psi	-	3920	Bar
TRANSMISSION RATIO (i)	1:392				



TECHNICAL

DISPLACEMENT CYCLE	0.58	in ³	-	9.4	cm ³
MAX PUMPING SPEED	100	cpm			
MAX OP. TEMPERATURE	212	°F	-	100	°C

PERFORMANCES

MAX DRIVE PRESSURE (pL)	145	psi	-	10	Bar
AIR CONSUPTION	32.6	scfm	-	924	NI/min (pL 145 psi - 10 Bar, 50 cpm)
MAX OUTLET FLOW	0.0	scfm	-	0.94	NI/min (100 cpm)
STALL PRESSURE	i * pL				

CONNECTIONS

INLET	3/8" BSPP (F)	DRIVE RELIEF VALVE	3/8" BSPP (F)
OUTLET	3/4-16 UNF	EXT. PILOT SUPPLY	1/8" BSPP (F)
DRIVE INLET	1/2" BSPP (F)	PULSE COUNTER	1/8" BSPP (F)
		AIR EXH. SILENCER	1/2" BSPP (F)

INFORMATIONS

LENGHT	6.5	in	-	165	mm (approx.)
WIDTH	6.3	in	-	160	mm (approx.)
HEIGHT	7.9	in	-	200	mm (approx.)
NET WEIGHT	52.4	lb	-	23.75	Kg (approx.)

ALL PICTURES SHOWN ARE FOR ILLUSTRATION PURPOSE ONLY. ACTUAL PRODUCT MAY VARY DUE TO PRODUCT ENHANCEMENT.