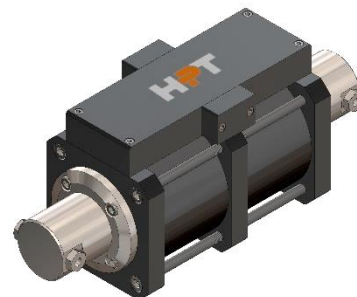


FEATURES

MODEL	HP600246SD27200			
TYPE	Liquid Pump - Double Acting			
	Double Drive			
RATING	60,000	psi	-	4137 Bar
MAX OUTLET PRESSURE (pB)	35,810	psi	-	2469 Bar
TRANSMISSION RATIO (i)	1:246			



TECHNICAL

DISPLACEMENT CYCLE	1.86	in ³	-	30.5	cm ³
MAX PUMPING SPEED	100	cpm			
MAX OP. TEMPERATURE	212	°F	-	100	°C

PERFORMANCES

MAX DRIVE PRESSURE (pL)	145	psi	-	10	Bar
AIR CONSUPTION	66.6	scfm	-	1,885	NI/min (pL 145 psi - 10 Bar, 50 cpm)
MAX OUTLET FLOW	0.1	scfm	-	3.05	NI/min (100 cpm)
STALL PRESSURE	i * pL				

CONNECTIONS

INLET	3/8" BSPP (F)	DRIVE RELIEF VALVE	3/8" BSPP (F)
OUTLET	3/4-16 UNF	EXT. PILOT SUPPLY	1/8" BSPP (F)
DRIVE INLET	1/2" BSPP (F)	PULSE COUNTER	1/8" BSPP (F)
		AIR EXH. SILENCER	1/2" BSPP (F)

INFORMATIONS

LENGHT	6.5	in	-	165	mm (approx.)
WIDTH	8.7	in	-	220	mm (approx.)
HEIGHT	10.2	in	-	260	mm (approx.)
NET WEIGHT	55.7	lb	-	25.25	Kg (approx.)

ALL PICTURES SHOWN ARE FOR ILLUSTRATION PURPOSE ONLY. ACTUAL PRODUCT MAY VARY DUE TO PRODUCT ENHANCEMENT.