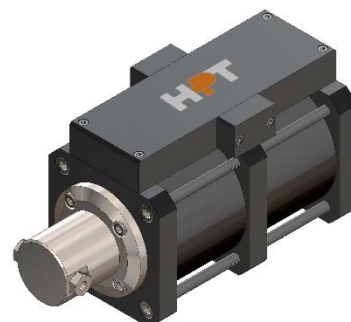


FEATURES

MODEL	HP300200SS24200			
TYPE	Liquid Pump - Single Acting			
	Double Drive			
RATING	30,000	psi	-	2068 Bar
MAX OUTLET PRESSURE (pB)	29,008	psi	-	2000 Bar
TRANSMISSION RATIO (i)	1:200			



TECHNICAL

DISPLACEMENT CYCLE	0.56	in ³	-	9.2	cm ³
MAX PUMPING SPEED	100	cpm			
MAX OP. TEMPERATURE	212	°F	-	100	°C

PERFORMANCES

MAX DRIVE PRESSURE (pL)	145	psi	-	10	Bar
AIR CONSUPTION	32.6	scfm	-	924	NI/min (pL 145 psi - 10 Bar, 50 cpm)
MAX OUTLET FLOW	0.0	scfm	-	0.92	NI/min (100 cpm)
STALL PRESSURE	i * pL				

CONNECTIONS

INLET	3/8" BSPP (F)	DRIVE RELIEF VALVE	3/8" BSPP (F)
OUTLET	3/4-16 UNF	EXT. PILOT SUPPLY	1/8" BSPP (F)
DRIVE INLET	1/2" BSPP (F)	PULSE COUNTER	1/8" BSPP (F)
		AIR EXH. SILENCER	1/2" BSPP (F)

INFORMATIONS

LENGHT	14.8	in	-	375	mm (approx.)
WIDTH	6.3	in	-	160	mm (approx.)
HEIGHT	7.9	in	-	200	mm (approx.)
NET WEIGHT	43.5	lb	-	19.75	Kg (approx.)

ALL PICTURES SHOWN ARE FOR ILLUSTRATION PURPOSE ONLY. ACTUAL PRODUCT MAY VARY DUE TO PRODUCT ENHANCEMENT.